

TELMATE TABLET

A wireless access point to the Telmate SmartJail Solution of communication, education and entertainment software services.



 Telmate®

THE TELMATE SMARTJAIL SOLUTION FEATURING TELMATE TABLETS

The Telmate SmartJail Solution is a unique and proprietary suite of communications, entertainment, education, facility operations, commissary and cash management software services that can be accessed by phones, stations, kiosks and now, wireless tablets.



HOW WE'RE DIFFERENT

AVAILABLE TO EVERY INMATE

The Telmate SmartJail Solution features the only shared inmate tablet providing all inmates with access to tablets and available services.

INDEPENDENT SOLUTION

Telmate's SmartJail Solution with inmate tablet access can be deployed independent from a facility's existing phone solution or facility network.

CORRECTIONS-GRADE WIRELESS NETWORK

Telmate's solution features Telmate Gatekeeper, a proprietary collection of security access control software that strictly monitors and filters inmate access to content and communications.

ULTRA-SECURE, LOCKED-DOWN DEVICES

Telmate uses devices with no room for contraband and no media slots. Telmate has customized the operating system of these devices to remove features that could present risks and add features to enhance security.

WIRELESS CHARGING

Unique to the Telmate solution is inductive wireless tablet charging done at custom, corrections-grade charging stations, eliminating risk and complications associated with charging wires.

FACILITY SYSTEM AUTOMATION

The Telmate SmartJail Solution helps facilities go paperless and improve efficiencies by automating costly processes such as grievances, requests, crime tips and PREA reports.



CORE FEATURES



Paperless Grievances, Requests, Crime Tips and PREA

An all digital, customizable inmate grievance, requests, crime tips and PREA solution that saves time, reduces risk and is designed for judicial review.



Message Exchange

A text message system that allows messages of up to 300 characters to be exchanged between inmates and verified friends and family members. Friends and family can send messages online or with our free mobile apps.



Photo Exchange

A photo exchange system that allows images to be shared with friends and family members with verified identities. Friends and family members can send photos online or with our free mobile apps.

The Telmate SmartJail Solution featuring Telmate tablets is currently deployed in correctional facilities nationwide, generating millions of minutes of inmate use each month.



Content

Mobile access to education, entertainment and reentry content including music, games, movies, news, books, websites, GED, law library, reentry programs and any other facility approved content to help improve inmate behavior and keep them focused on productive activities.



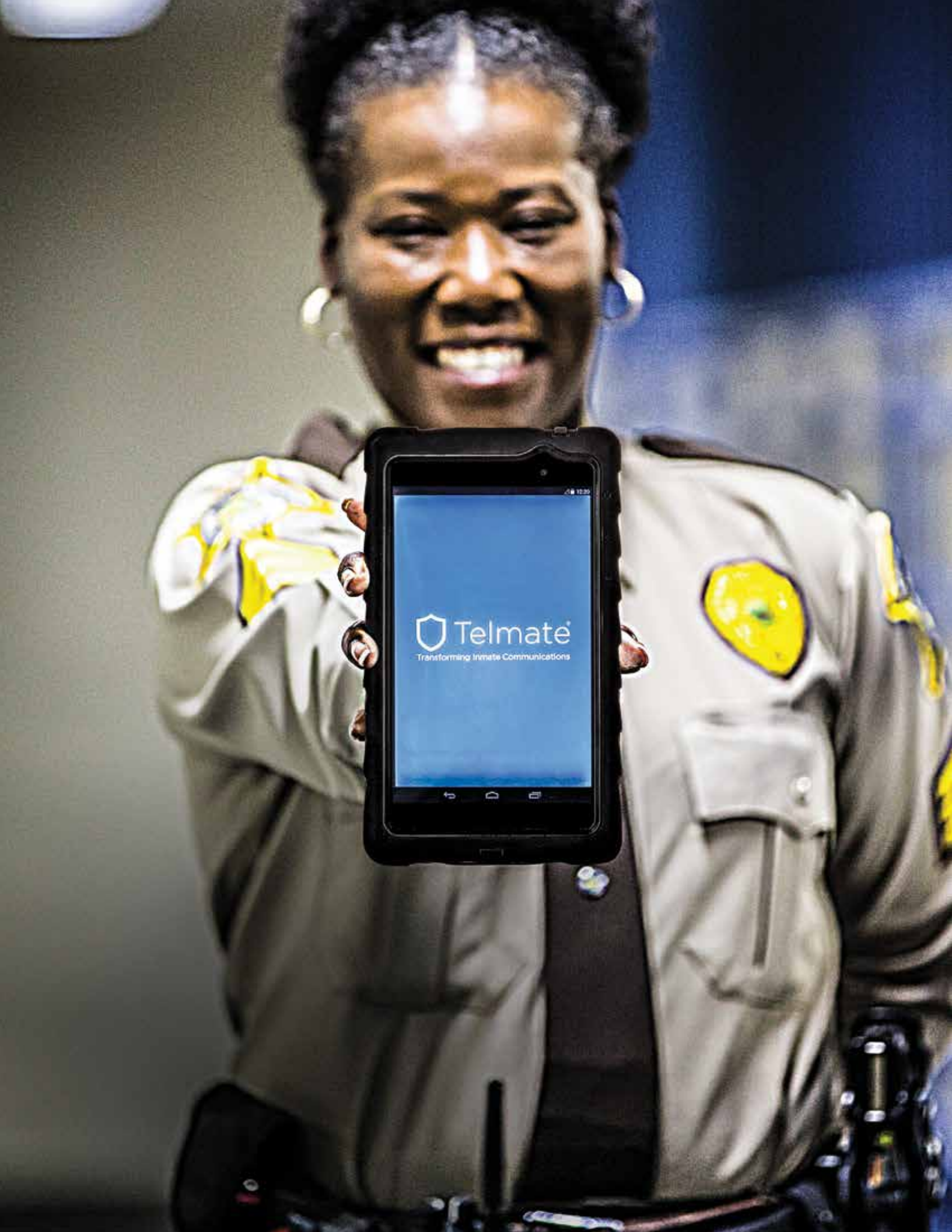
Commissary Ordering

Access to commissary software means inmates can order directly from your existing commissary provider. Telmate has integrated tablet ordering with the most popular commissary providers including Keefe, Swanson, Cactas and Trinity.



Account & Cash Management

Real time account management controls as well as cash management features that allow for instant money transfer from trust fund accounts.



FACILITY BENEFITS

Better Behaved Inmates

Inmates want to use the devices and will behave better for the privilege. In addition, tablets help reduce inmate stress by turning painful idle time into productive, engaging time.

Paperless Grievances, Requests, Crime Tips and PREA

A customizable, paperless submission, tracking and response system that saves time, reduces risk and is designed for judicial review.

Increase Phone Revenue

Providing access to current content like news and entertainment keeps inmates relevant and gives them more to talk about.

Web-Based Admin Access

Our secure, administrative dashboard, Telmate Command offers 24/7/365 real-time access to all system data and controls.

Increase Staff Efficiency

The Telmate solution is self-managed by the inmates so no staff time is required for device delivery or collection.

Reduce Mail Review

Telmate's messaging and photosharing features yield a 30-50% drop in physical mail.

Avoid Private Property Issues

Telmate's unique shared tablet model avoids personal property issues and eliminates staff needing to deal with disabling access for bad behavior.

Simplify Staff Communication

Staff may send messages to any number of inmates and verify they were seen by each inmate.

No Hardware or Software Costs

Telmate provides all hardware and software including wireless, inductive tablet charging stations.

24/7 Support

Our 24/7, domestic based, bi-lingual call center is available for absolutely any questions or requests from staff, inmates and their friends and family.

JMS and Trust Fund Integration

Free integrations that allow inmates to access the tablets without requiring data entry, and also the ability to pay for tablet use directly from their trust fund account.

Enhance Content Delivery

Telmate can help expand existing GED, job training, job search, local and legal resources.

We are not only experiencing the Telmate Tablet as a step forward in inmate communications and content delivery, but also as a tool that is having a profound and positive impact on how inmates behave.

Captain Brian Barrs
Jail Commander
Effingham County



I had really bad anxiety when I first came in, now I grab a tablet, put on the music and walk around. It calms me down.

Anonymous inmate user

THE POSITIVE, POWERFUL IMPACT ON INMATE BEHAVIOR, WELL-BEING & REENTRY

Improving Inmate Behavior and Facility Safety

Facilities running the Telmate SmartJail Solution with tablets are noting significant decreases in inmate-on-inmate and inmate-on-staff assaults as well as a general reduction in rule and behavior code violations. Inmates are behaving better.

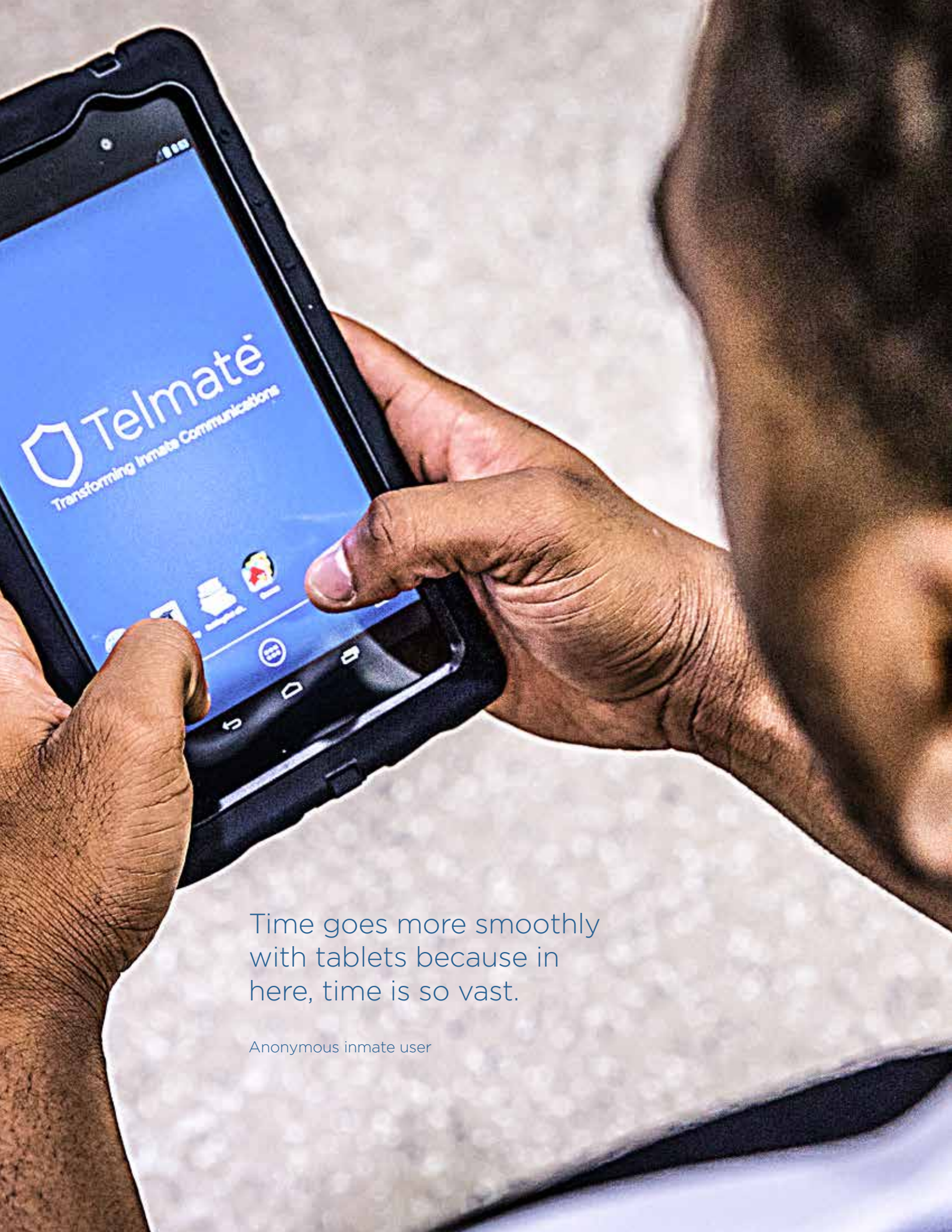
Reducing Stress & Building Responsibility

Telmate Tablets settle the corrections environment by helping inmates turn long stretches of idle, negative time into active, engaging, and constructive time. The result is a calmer, less anxious, and less aggressive inmate population. Tablet content including music and games has a calming effect on inmates. Telmate Tablets are managed independently of facility staff, so inmates regain small, safe areas of choice and responsibility, which promotes positive behavior, has a neutralizing effect on inmate social dynamics, and reduces overall risk for staff.

Aiding in Positive Reentry

The Telmate SmartJail Solution featuring Telmate Tablets increases an inmates ability to communicate and connect with loved ones which aids in a successful reentry. In addition, the Telmate SmartJail Solution and Telmate Tablets are ideal access points for effective reentry support and learning management systems that can include content relating to job and life skills and continuing education. Any Web-based content that does not include direct communication may be added to the tablets at the facility's discretion.

The Telmate SmartJail Solution featuring Telmate Tablets increases an inmates ability to communicate and connect with loved ones which aids in a successful reentry.



Time goes more smoothly with tablets because in here, time is so vast.

Anonymous inmate user

INMATE BENEFITS

Introduces Choice

In an environment where each day there are very few choices to pass the time, the Telmate Tablet increases the likelihood that the inmate can choose to be engaged in something productive vs. destructive during their incarceration.

Modern Communication

Most young adults today prefer text messages and photo exchange over physical mail. The Telmate Tablet brings these popular ways of communicating into corrections.

Productive, Occupied Time

One of the most painful and aggravating aspects of incarceration is the boredom and painfully expansive time. The tablet offers access to an array of communication and content that help make time more productive and engaging.

Technology Experience

Interacting with Telmate's solution introduces many inmates to modern

interactive tablet devices for the first time which can aid in the development of life, job and reentry skills.

Relationships & Connections

Telmate helps support positive relationships and provide constructive development opportunities.

Breaks Down Social Barriers

Telmate's SmartJail Solution content like music and entertainment opens discussions between inmates who wouldn't normally interact.

Reentry & Self Improvement

The Telmate Tablet provides mobile access to valuable resources such as: reentry support, religious texts and services, addiction/recovery literature, national news, sports scores, weather, and more.

Paperless Grievances & Requests

Automated, digital grievances, requests, crime tips, and PREA reports in a traceable, secure manner.



ACCESS TO MORE DATA TO HELP INVESTIGATORS SOLVE CRIMES

Telmate Verified & Telmate Investigator

The Telmate SmartJail Solution is automatically linked to Telmate Verified, the correction industry's only automated identity verification system, and our suite of industry leading investigator tools called Telmate Investigator. Simply put, the more inmates use the system through the tablets, the more staff know about them and their personal networks.

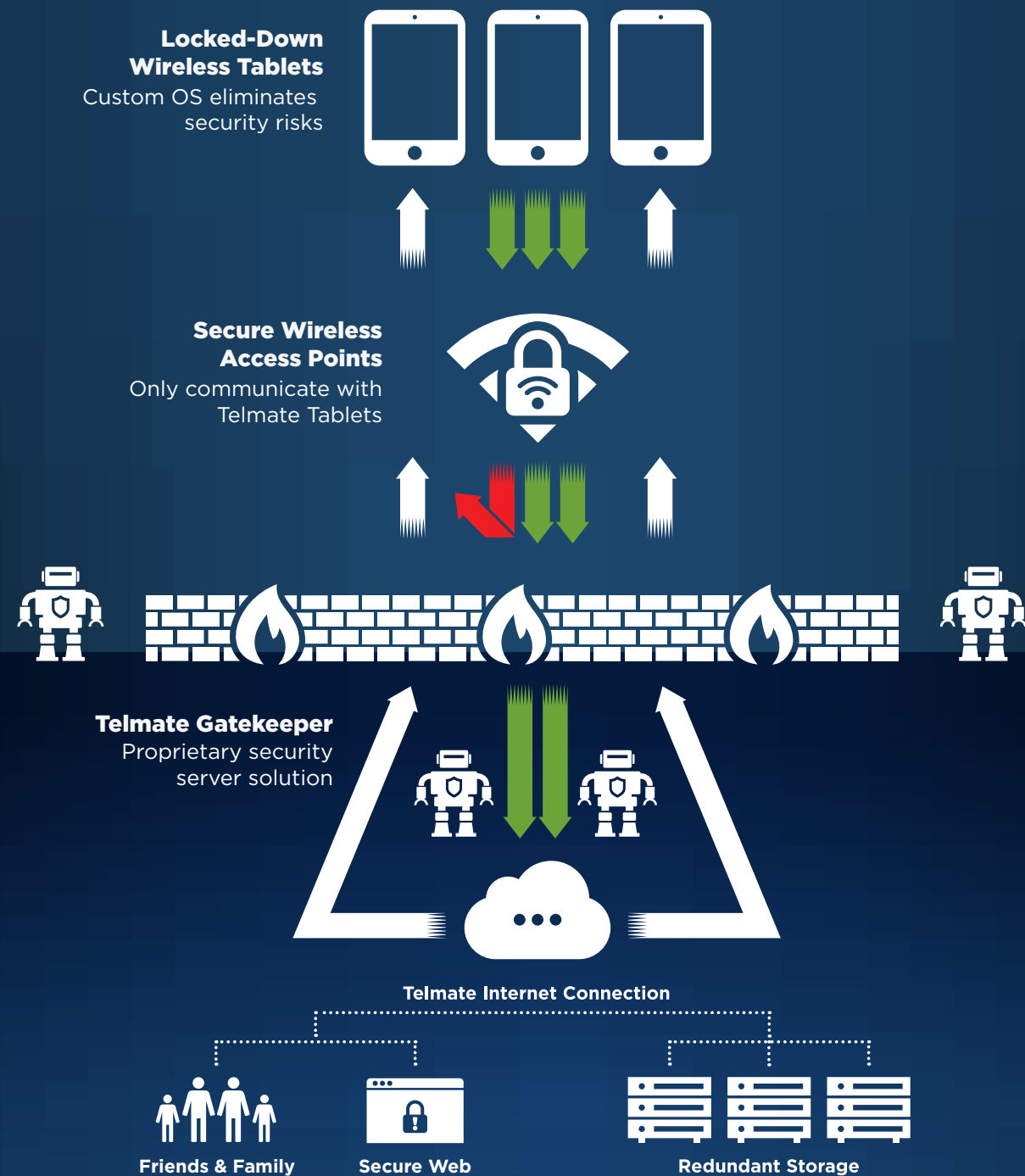
Telmate Verified: Telmate Verified is a proprietary system developed to positively identify all system inmates, friends and family users via deposits, calls, visits, photos and messages in the Telmate system. Telmate Verified gives facilities a profile of each user which can include a face, name, address and phone number. Telmate Verified also allows facilities to map multiple levels of connections between users and a view a timeline of all activity.

Telmate Investigator: Telmate Investigator is a powerful, technologically-advanced suite of tools that provides actionable intelligence helping law enforcement to prevent and solve crime. With Telmate Investigator, facilities can instantly analyze inmates' personal networks and gain unprecedented crime fighting intelligence.

In my 15 years of law enforcement, Telmate Investigator is by far the leading set of investigator tools. If you're a policeman and not using it, you are behind the times.

Sergeant Jamie Harris
Lake County Police
Department Detective

INSIDE FACILITY

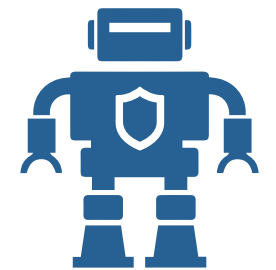


OUTSIDE FACILITY

WE PUT WIRELESS ACCESS ON LOCKDOWN

Telmate Gatekeeper Firewall/Proxy

At the center of Telmate's network security solution is Telmate Gatekeeper, a full featured collection of security access control software. All network traffic is processed by Telmate Gatekeeper, and only requests and responses that meet predefined requirements are allowed to pass.



Telmate Gatekeeper requires individual VPN connections between all networked devices and the wireless router. Individual inmate credentials are used to authenticate the networked device, allowing a connection to take place, and all networked traffic is processed by a network proxy, which utilizes strict whitelist controls.

Telmate Gatekeeper provides complete threat avoidance measures by taking steps to prevent any communications that could introduce risk such as spam or phishing, device-to-device communication, file transfers and more.



Secure Wireless Access Points

The Telmate solution features customized WiFi access points that are locked down, and can only communicate with Telmate Tablets. This means absolutely no other wireless device within the facility can request or receive data through the Telmate platform.



Locked-Down Devices

Telmate utilizes Android devices with no room for contraband and no media slots. Telmate has modified the operating system to permanently remove features that could present potential security risks and replaced them custom and secure versions.



TRANSFORMING INMATE COMMUNICATIONS
www.telmate.com